



Upgrade Manual

Replacing Battery with

LifePo4 Battery

-Drop Pan



Our team at Bushel Plus is committed to evolve and innovate our new products. However, are also committed to helping our past customers stay up to date through upgrades to new technology.

That's why we do our best to create our new part versions backwards compatible for you.



Happy Harvest!

If you have any questions, please don't hesitate to reach out to us through our website:

www.bushelplus.com/ Contact us

We are happy to help and are committed to continue serving you with high quality parts and upgrade kits!



Replacing Battery with LifePo4 Battery

-Drop Pan

Please read the entire document prior to replacing the battery.

NOTE: The LCD gauge will have to be reprogrammed as well, see instructions following.

Step 1: Remove carrier channel

Remove carrier channel, as per instructions in the manual that came with your Drop Pan System. You can also find the most recent user manual in our Bushel Plus App, under “Menu” → “User Manual”.

Step 2: Remove the existing battery terminal

Remove the existing battery terminal connections and harness from the battery. Keep the tape from harness for following step. Remove the battery by prying it off the double-sided tape. Be careful not to damage the battery and cause battery leakage



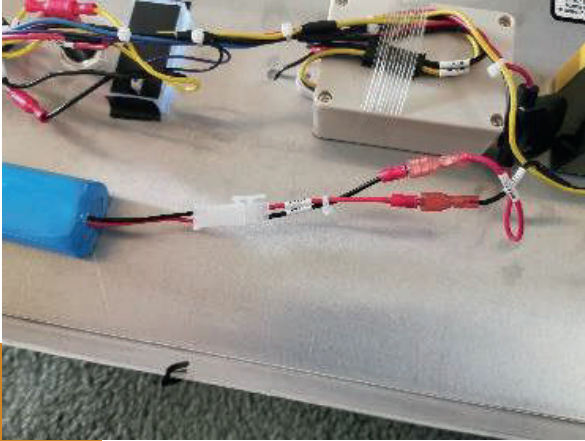
Step 3: for proper bonding to the foam pad

Clean off the area where the old battery used to be for proper bonding of the foam pad. Placement may be tight, so proper alignment is important. Attach the foam pad to that area.

Note: the opening for the battery should be in the direction of the channel and the tape towards the main silver carrier body.

Step 4: Prior to attaching the spade

Prior to attaching the spade connectors to the wiring harness, insert the battery into the foam cavity.



Note: Before attaching the spade connectors, use pliers to compress the female harness terminals. This will allow them to make a tight connection.

Important:

Attach the **POSITIVE** spade terminal to the Positive and the **NEGATIVE** to the Negative. Remove the yellow tape protecting the connector end on the battery. Now you can plug the battery into the connector that is attached to the harness.

Step 5: Place the fuse holder

Place the fuse holder in between the new foam battery holder and the receiver. Bundle the wires nicely to fit onto the receiver and use the reserved tape to secure the wires to the receiver or use a new piece if you wish.



Step 6: Check the function of the system

Check the function of the system to ensure everything works correctly prior to reassembly.

Step 7: Reattach

Reattach the center channel.

Step 8: Charge the battery

Charge the battery fully prior to using.

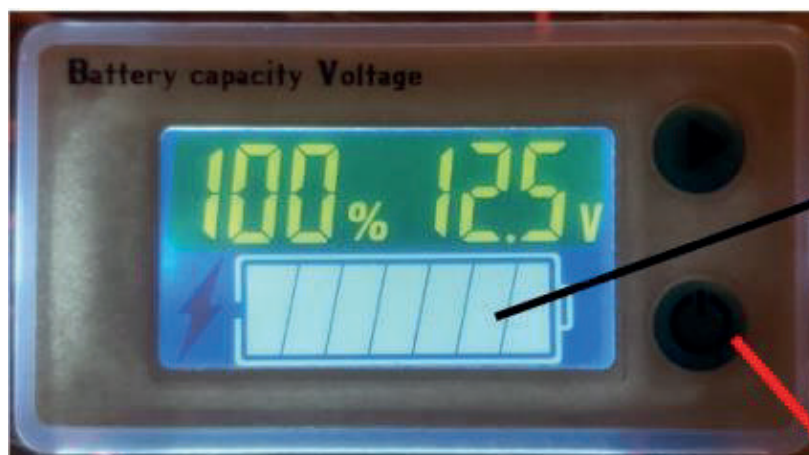
Step 9: LCD built in display (Year 2018)

If your carrier has the following LCD built in display (Year 2018), your set up is completed now. Please make sure to recharge your battery early enough (First 3 green bars means optimal operating level).



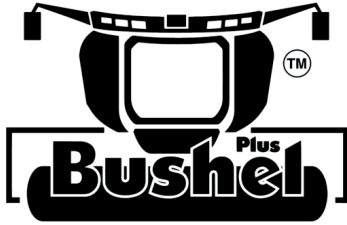
Step 10: LCD built in display (Year 2019)

If your carrier has the following LCD built in display (Year 2019), please see steps below for Preprogramming LCD Screen.



Reprogramming LCD Screen:

- 1.) Turn Drop Pan power ON, once the battery has been replaced and has some charge.
- 2.) On The LCD Screen, Press and Hold the Arrow Button → until the #2 appears on the screen.
- 3.) Now Press the Arrow Button until the # 1 appears on screen.
- 4.) Now Press the Power Button (⏻) once.
- 5.) Press the Arrow → until (F) appears
- 6.) Press the Power Button (⏻) until (F2) appears.
- 7.) Press the Arrow → until (F4) appears.
- 8.) Press and hold until (F4) disappears.
- 9.) The unit should be successfully programmed now. To verify, cycle the power, when the display screen lights up, the screen should show [F4] for 2 seconds and then switch to the normal operation mode which shows the battery charge amount.



Optimize Your Combine

Happy Harvest!

If you have any questions, please don't hesitate to reach out to us through our website:

www.BushelPlus.com/Contact us

We are happy to help and are committed to continue serving you with high quality parts and upgrade kits!

